

DIY – GIFT BOXES OUT OF GREETING CARDS

Rebecca Buff

9/4/19

<https://www.wikihow.com/Make-a-Gift-Box-out-of-a-Greeting-Card> (for a more detailed look at instructions)



Craft Colorful Gift Boxes Out of Greeting Cards!

TRANSFORM your treasured greeting cards into one-of-a-kind keepsake boxes with this timely idea from Sharon Egger of Hickman, Nebraska.

Whatever the occasion, you'll always have tailor-made materials available. And kids can fold these up in a flash, using just a ruler, pencil and a bit of glue. Plus, the boxes will save time and money in another way—they never need gift wrap!

Materials Needed (for one):
Christmas card

Scissors or rotary cutter and mat

Ruler

Pencil

Eraser

Tacky (white) glue

Finished Size: The size of the card box will vary depending on the size of the card used.

Directions:


Cut card along fold in order to form front and back sections. The front of the card will form the top of the box, and the back will form the bottom.

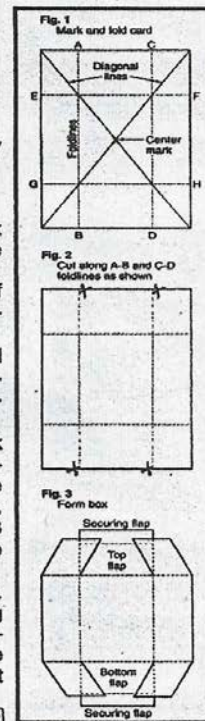
Cut off a scant 1/8 in. on two adjoining sides of back section so bottom of box will be slightly smaller than the top.

Mark the center on the inside of the front and back sections by lightly drawing a pencil line diagonally from corner to corner. Repeat with remaining corners to form an "X".

Referring to Fig. 1, fold both side edges of back section to center mark and crease sharply, making foldlines A-B and C-D. Unfold. In the same way, fold top and bottom edges to center mark, making foldlines E-F and G-H. Cut to folds on A-B and C-D crease lines as shown in Fig. 2. Erase pencil lines.

Fold up sides and bring corners in toward center. Fold the top and bottom flaps up and the securing flaps over corners as shown in Fig. 3. Glue the securing flaps in place. If your card is square, the securing flaps will be omitted. Repeat with front section of card to form top of box.

Place top over bottom to complete gift box. 



Materials Needed (for one):

Christmas Card
Scissors or rotary cutter & mat
Ruler
Pencil
Eraser
Tacky (white) glue or glue stick



Finished Size: The size of the card box will vary depending on the size of the card used.

Directions:

1. Cut card along fold in order to form front & back sections. The front of the card will form the top of the box & the back will form the bottom.
2. Cut of a scant 1/8 in. on two adjoining sides of back section so bottom of box will be slightly smaller than the top.
3. Mark the center of the inside of the front & back sections by lightly drawing a pencil line diagonally from corner to corner. Repeat with remaining corners to form an "X".
4. Referring to Fig. 1, fold both side edges of back section to center mark & crease sharply making fold-lines A-B & C-D. Unfold. In the same way, fold top & bottom edges to center mark, making fold-lines E-F & G-H. Cut to folds on A-B & C-D crease lines as shown in Fig. 2. Erase pencil lines.
5. Fold up sides & bring corners in toward center. Fold the top & bottom flaps up & the securing flaps over corners as shown in Fig. 3. Glue the securing flaps in place (If your card is square, the securing flaps will be omitted). Repeat with front section of card to form top of box.
6. Place top over bottom to complete gift box.

Fig. 1
Mark & Fold Card

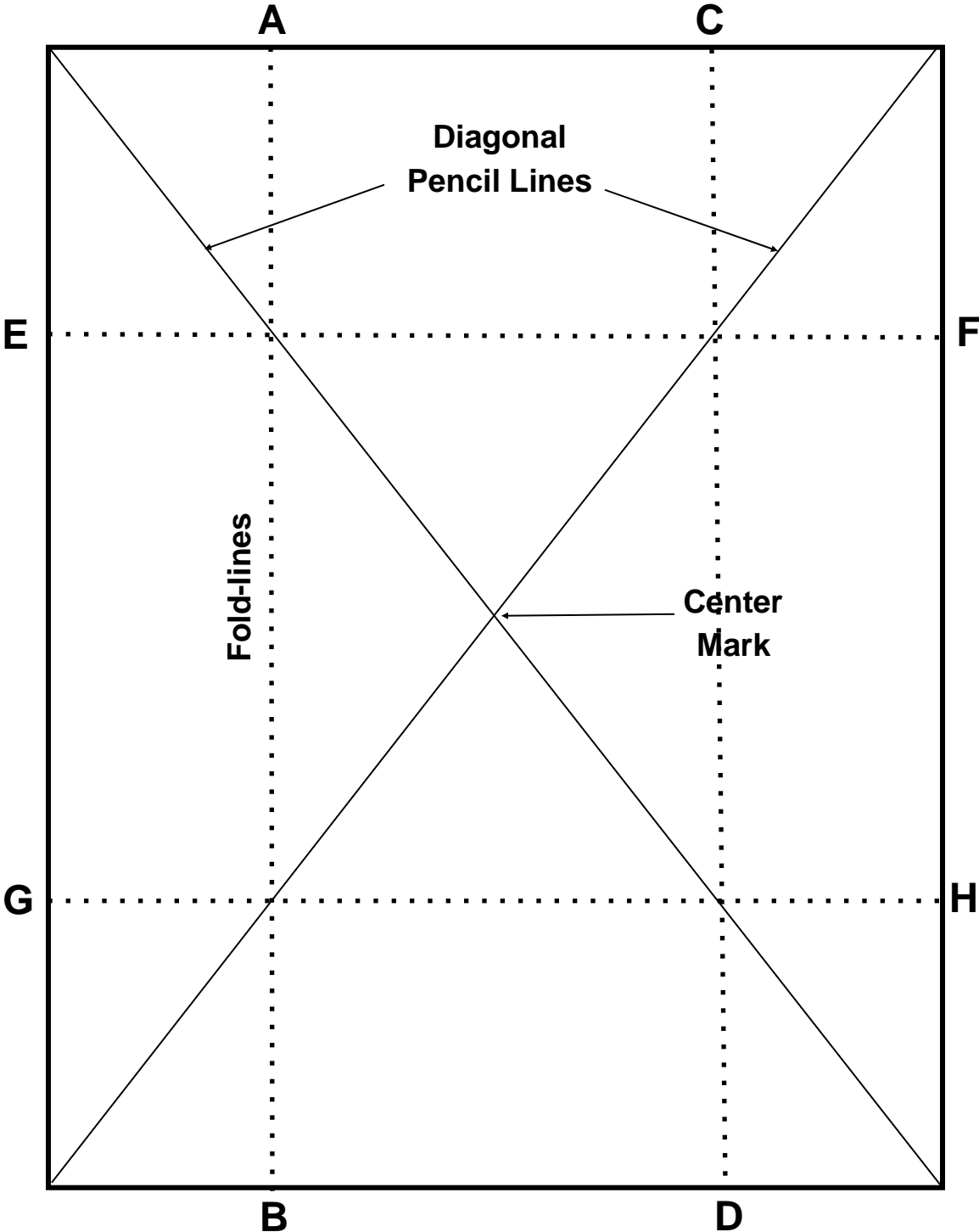


Fig. 2

Cut along A-B & C-D fold-lines as shown

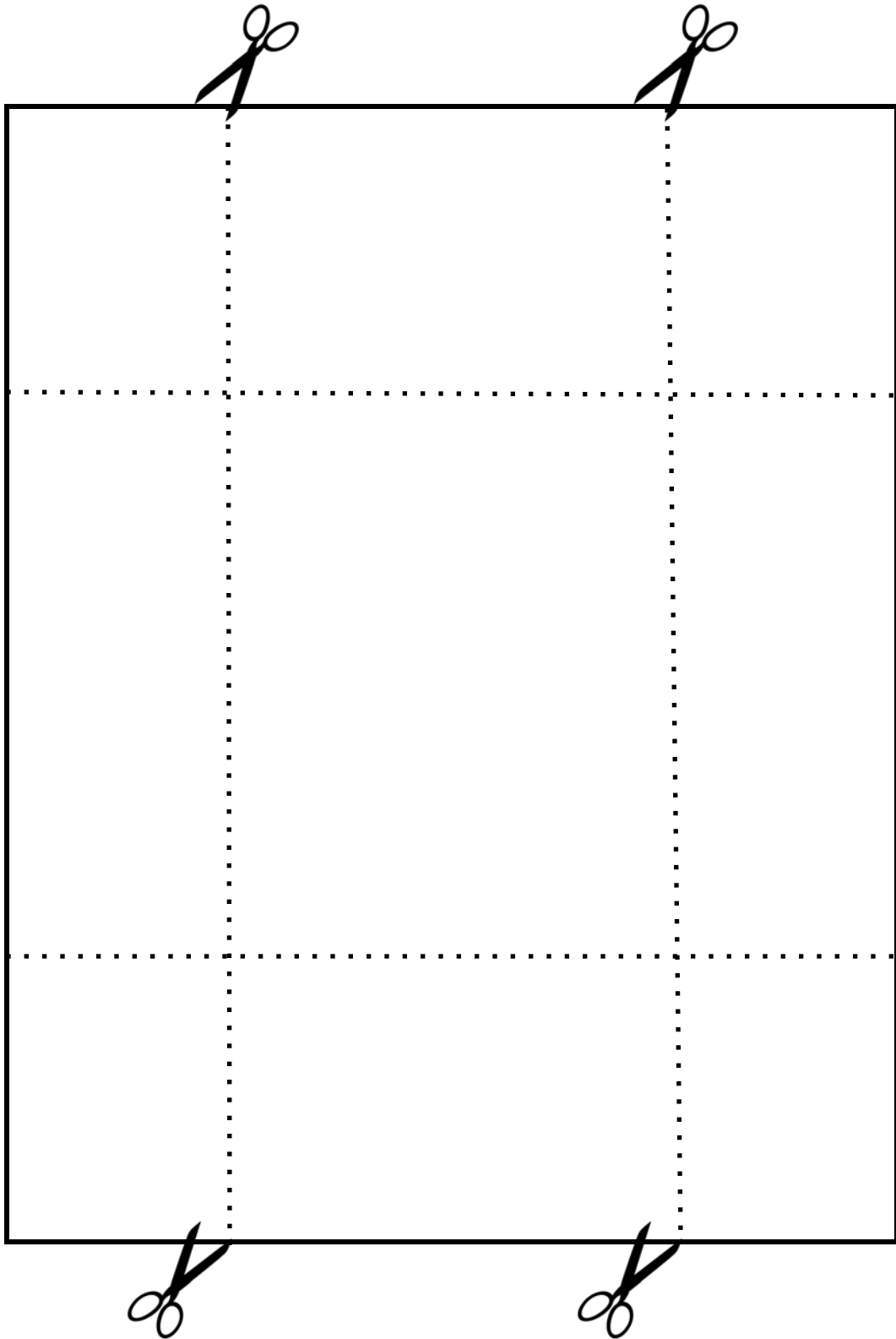


Fig. 3
Form Box

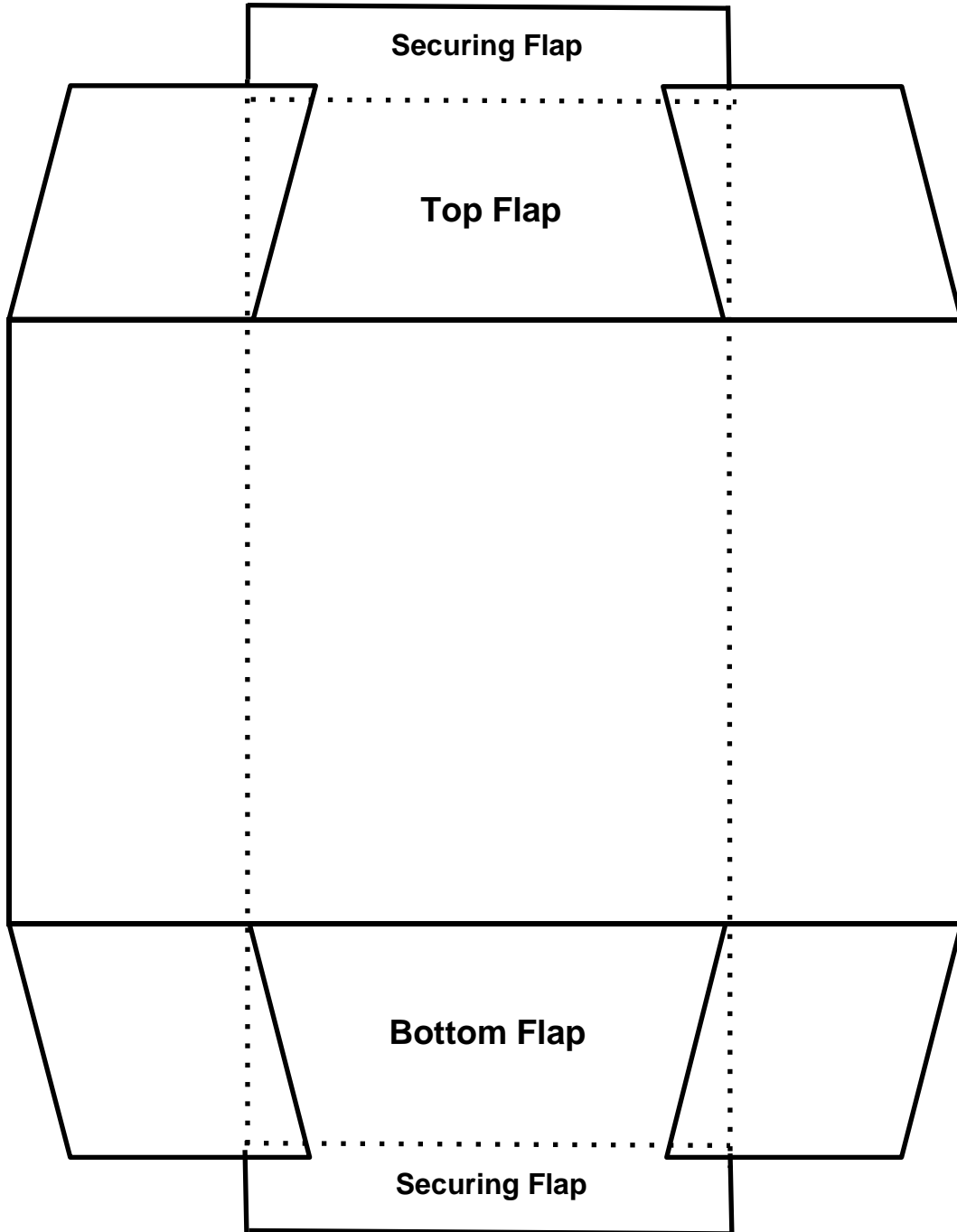
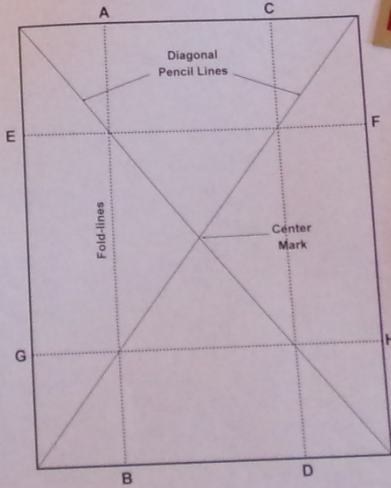


Fig. 1
Mark & Fold Card



*Remembering you
this holiday season
with warm feelings
and a wish for all the merriest.*

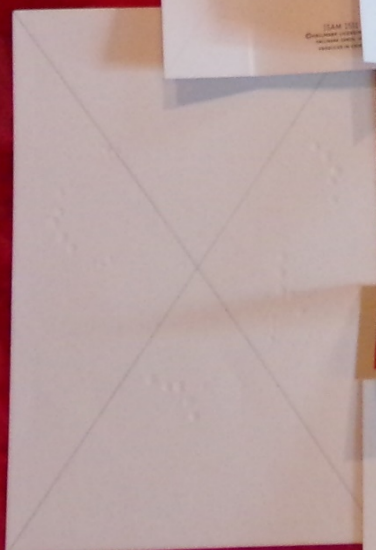
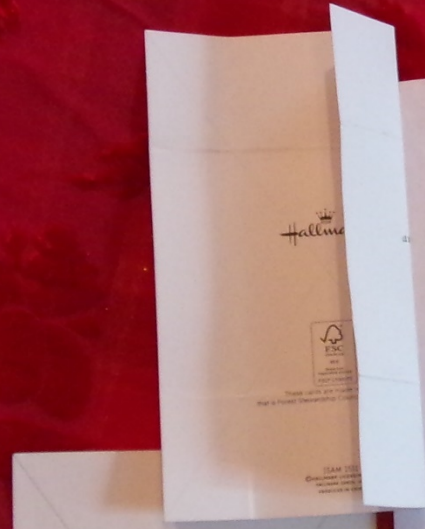


Fig. 2

Cut along A-B & C-D fold-lines as shown

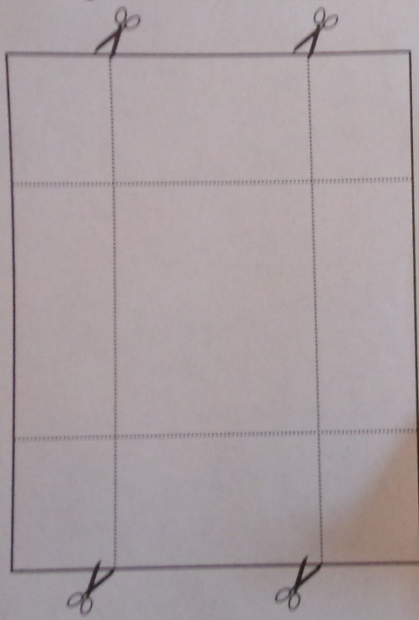
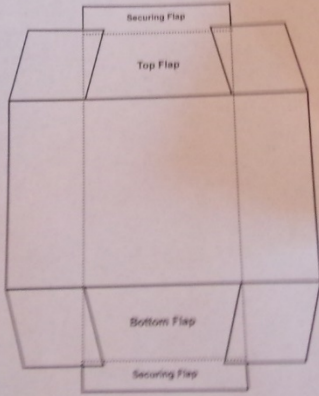


Fig. 3
Form Box





wikiHow to Make a Gift Box out of a Greeting Card

